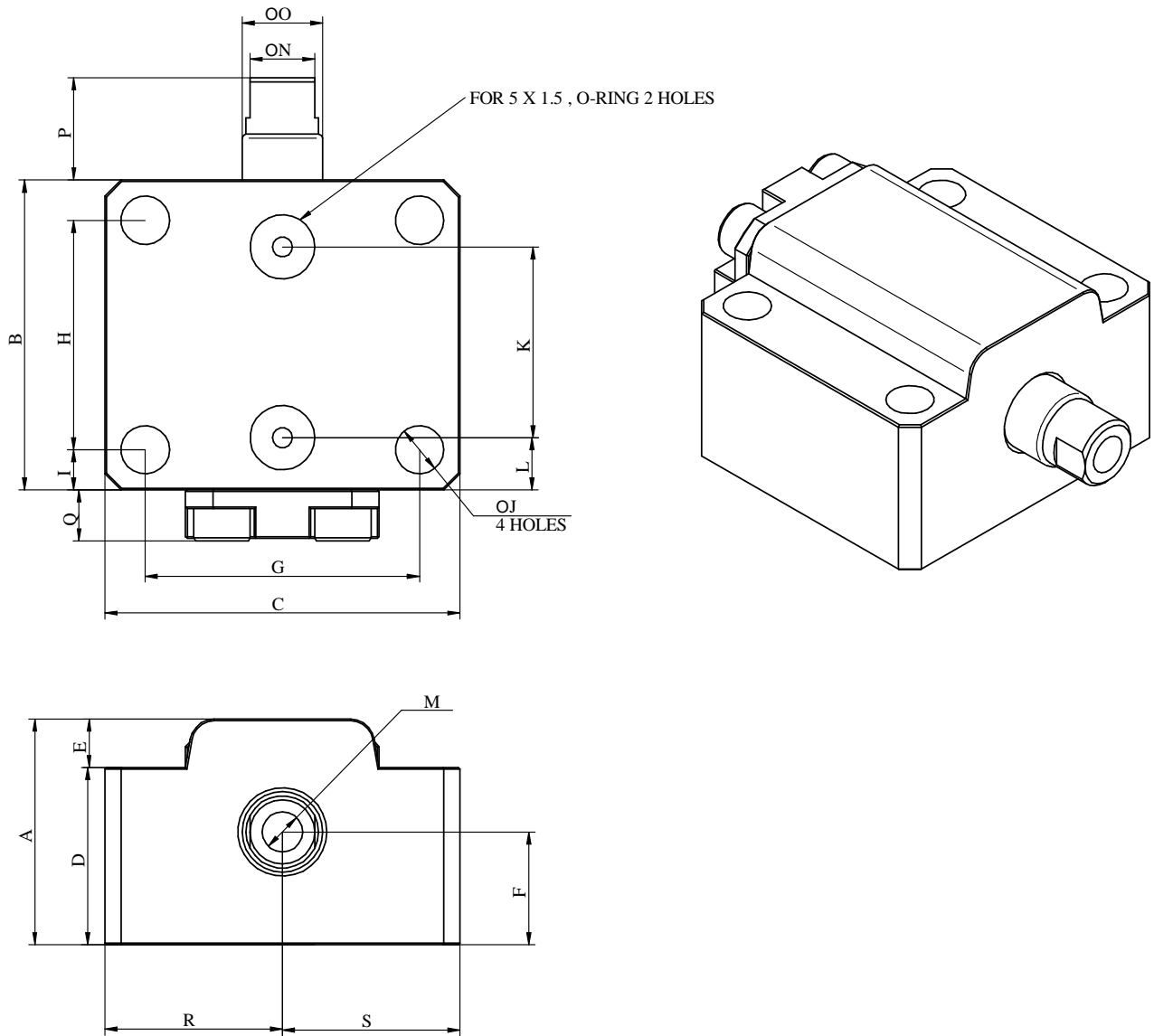


# HYDRAULIC PUSHER DOUBLE ACTING



## External Dimensions:



**MODEL NO:**

<b>HP</b>	<b>12</b>	<b>13</b>
	1	2

1- BORE DIAMETER

2- STROKE LENGTH

MODEL NO	HP-12-13	HP-18-13	HP-25-13	HP32-13	HP-40-13
BORE DIA	Ø12	Ø18	Ø25	Ø32	Ø40
STROKE LENGTH	13 MM	13 MM	13 MM	13 MM	13 MM
BALANCE STROKE	3.0MM	3.0MM	3.0MM	3.0MM	3.0MM
A	28	34	39	46	53
B	38.5	44.3	45.5	47.5	48.6
C	44	45	52	62	72
D	22	28	33.5	37	42
E	6	6	4.5	9	11
F	14	17	19	22.5	26
G	34	35	41	50	60
H	28.5	32	33.5	33.5	34.5
I	5	6	6	7	7
ØJ	6	6	6	7	7
K	23.7	24.2	24.8	26.7	26.5
L	6.5	7.3	7.65	7.5	8.24
M	M6X10 DEEP	M8X10 DEEP	M8X10 DEEP	M8X10 DEEP	M8X10 DEEP
ØN	8	13	13	13	14
ØO	10	14	16	16	18
P	12.7	12.7	12.7	12.7	13.1
Q	6	6	6	8	8
R	22	22.5	26	31	36
S	22	22.5	26	31	36
AREA (A) cm <sup>2</sup>	1.1311	2.5450	4.9094	8.0435	12.5680
All dimensions in mm					

Actual Applied force (KN)  $F = \frac{A \times P}{10} \times 0.9$  ( 90% Efficiency)

A = Area of Cylinder (cm<sup>2</sup>); P = Operating Pressure (MPa)

Min. Operating Pressure = 10 Bar

Max. Operating Pressure = 70 Bar

Max. Operating Temperature = 100°C